



Modernisation of *Atalante R/V*

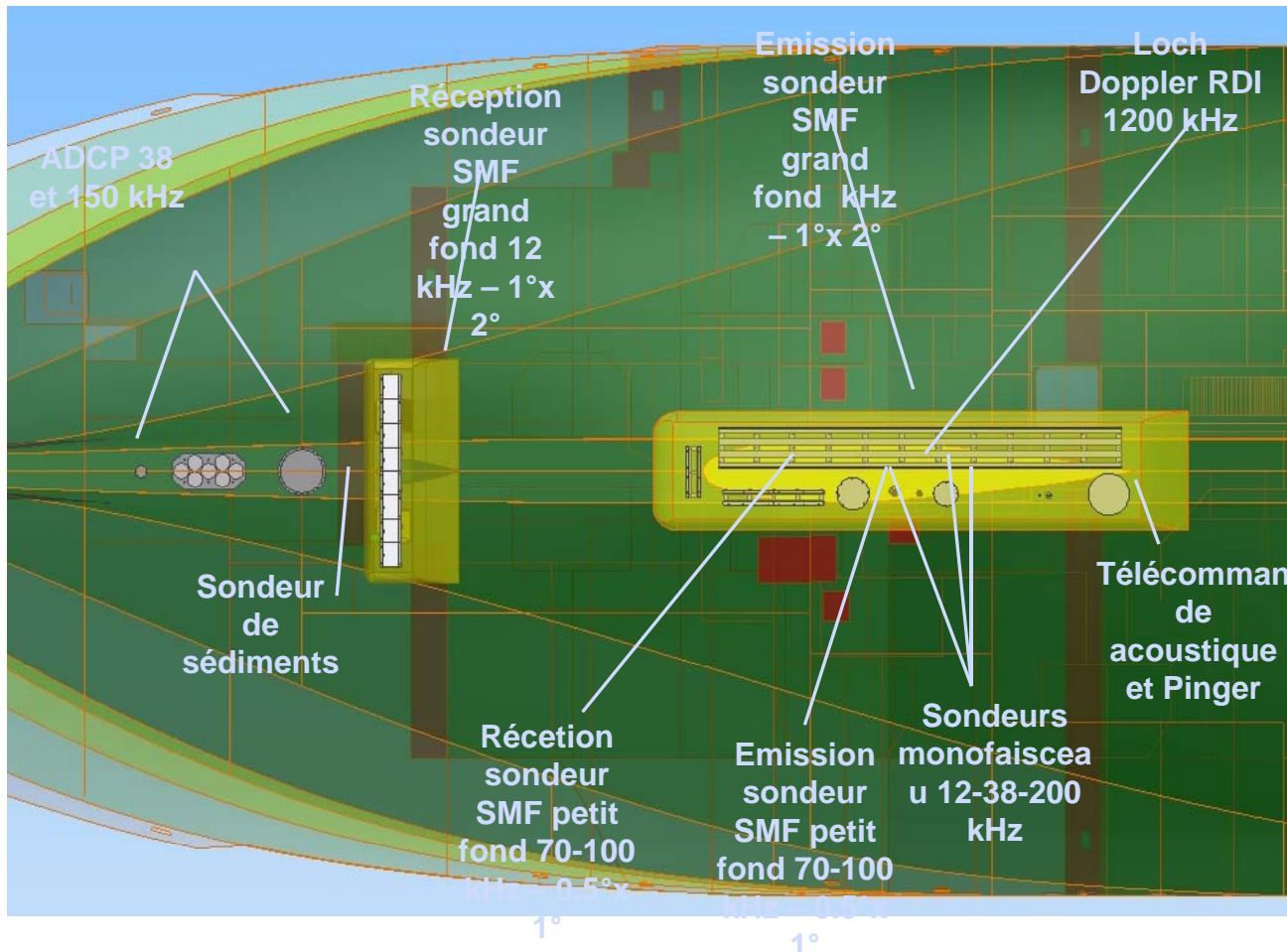
- Shipyard contract signature : April 2008
- Studies : April-December 2008
- Delivery to shipyard : Nov. 7th, 2008
- Delivery to Ifremer : April 19th, 2009
- Sea trials : Mai 20th to July 14th 2009
- First cruise : 2 août 2009





Ifremer

➤ REPLACEMENT OF SCIENTIFIC EQUIPMENT



- SIMRAD EM722-710
- SIMRAD ER60
- Sub Bottom Profiler IXSEA
- ADCP RDI
- Pinger SEPIA



➤ **REPLACEMENT OF ALL HARDWARE and SOFTWARE**

IT environment



Installation of VSAT



Giga Ethernet network



Video and data streaming (KVM matrix)



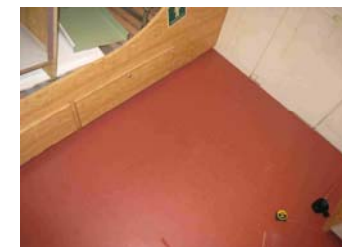
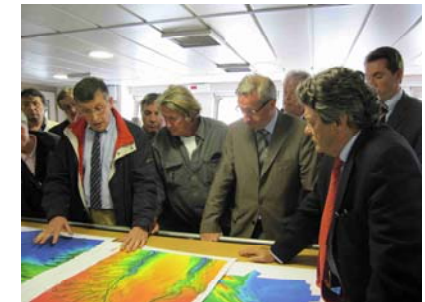
Softwares





➤ **GENERAL MAINTENANCE**

- Mechanical repairs and maintenance
- Painting
- Accomodation
- Replacement of systems :Davits, VAC, propulsion regulation, energy management,...





Ifremer

Modernisation of *Victor 6000*

➤ Operational objective

- 2 operators for control (3 actually)



➤ Technical objectives

- Replacement of « informatics »
- HD for main and vertical video
- New transmission system
- Dead reckoning with PHINS sensor
- Weight balance revision

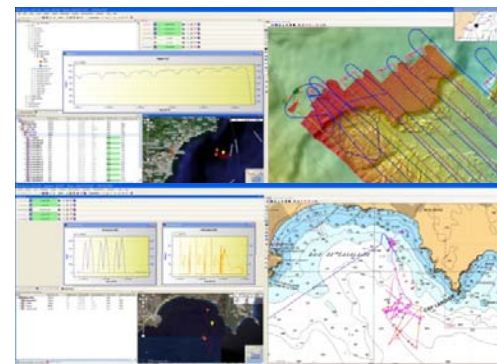
➤ Schedule

- Development : May – Sept. 2009
- On land tests without vehicle : Sept. to Dec 2009
- On land and pool tests : Jan.to March 2010
- Sea trials : July 2010



➤ **HARWARE AND SOFTWARE**

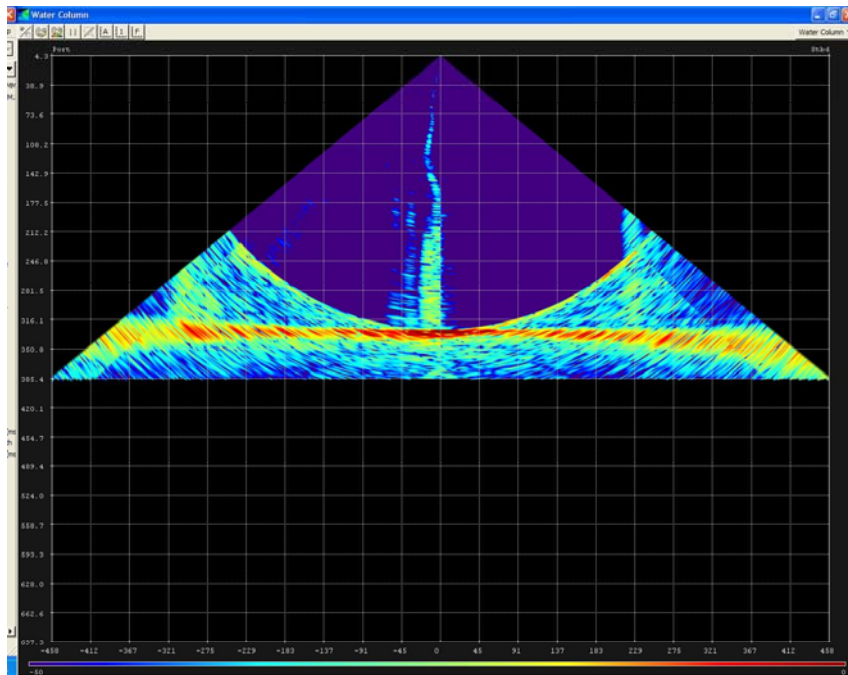
- All is replaced : Equipment and software
- Real time control
- Preparation and dive management
- Video and data management
- Scientific equipment management





Up-grade of the Suroit R/V Multibeam Echo Sounder

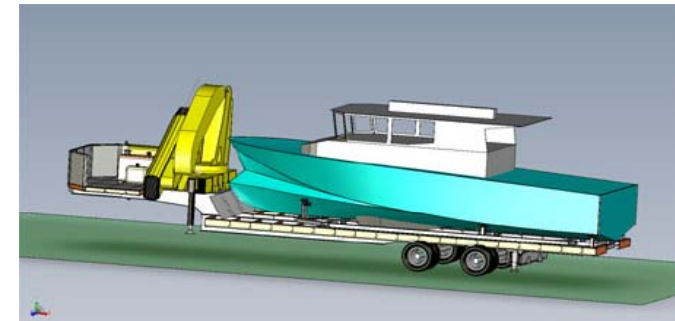
- Upgrade of EM300 to EM302
- Installation conducted in October 2009
- Very good result in sea water column detection
- Bathymetry performances to improve



Gaz bubble plume in marmara sea – November 2009



Haliotis launched for operational use in May 2008



➤ Requirement

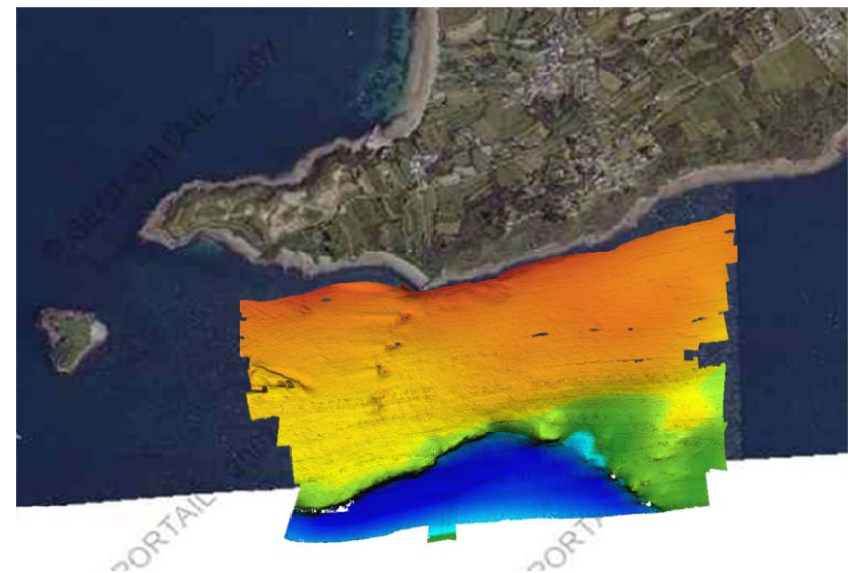
- Near shore habitat mapping
- Shallow water survey for geology



Ifremer

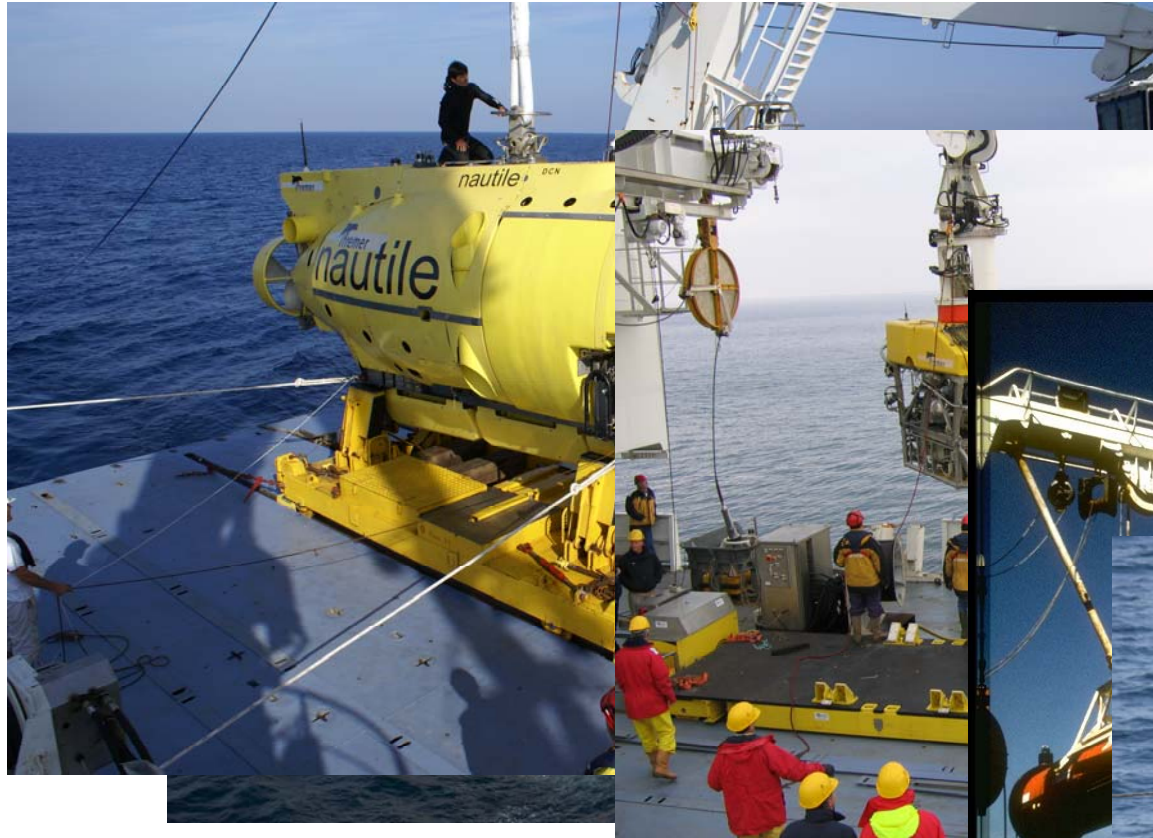
➤ HALIOTIS SPECIFICATIONS

- Length: 10,3 m
 - Weight : 4,6 t
 - Draft : 0,8 m
 - V max = 18 nds
 - Crew : 2
 - Scientist : 1 (+ 1)
- Geoacoustics Geoswath sonar - 250 kHz
 - SIMRAD ER60 120kHz
 - Sub bottom Profiler - 1,8 à 5,3 kHz





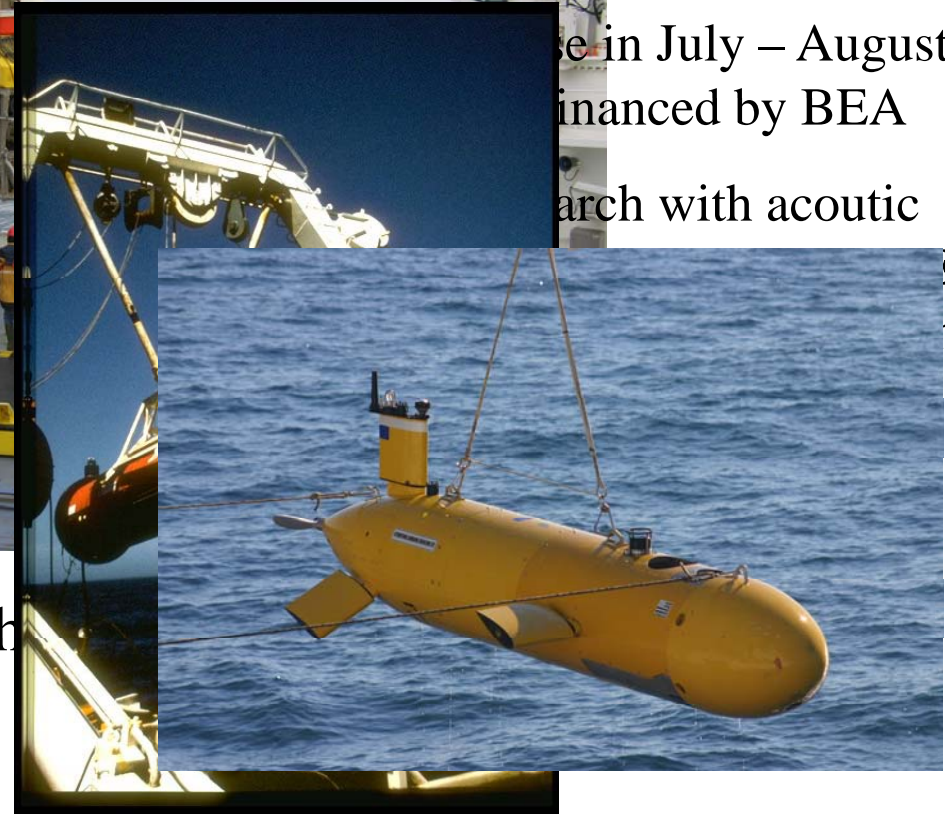
Ifremer



? R/V ➤ Research of « Back boxes » of AF 447 flight in Atlantic océan by 4000m depth

... in July – August
... financed by BEA
... arch with acoustic

ES in
nger



➤ *Pourquoi pas?* underwater veh clearly demonstrated